

**CERTIFIED LAND CORNER RECORDATION**

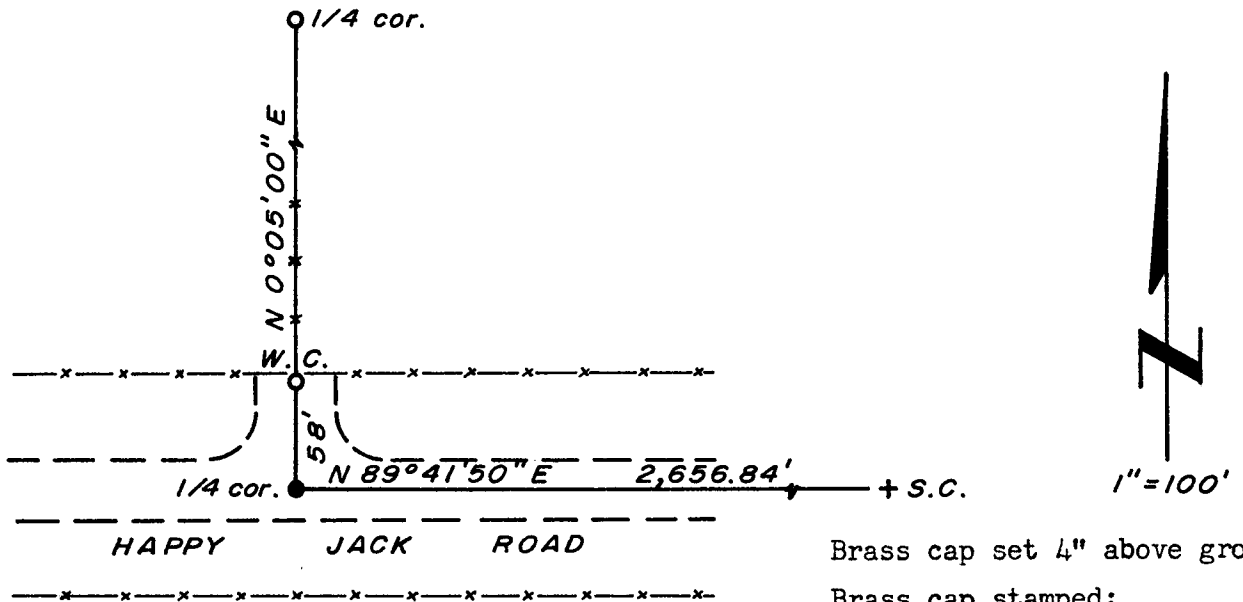
DESCRIPTION OF CORNER EVIDENCE FOUND, AND ORIGINAL RECORD (if known)

LOCATION Found a railroad spike with "X", in paved roadway.  
 T.14N., R.67W.  
 1/4 S.33  
 1/4 S. 4  
 T.13N., R.67W.  
 6th P.M.

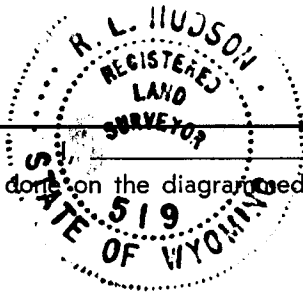
DESCRIPTION OF MONUMENT AND ACCESSORIES ESTABLISHED TO PERPETUATE THE ORIGINAL LOCATION OF THIS CORNER:

At the corner: Not remonumented.  
 Accessories: Set a 1 1/2" dia. x 30" long (concrete-filled) iron pipe with brass cap; N 0°05'00" E, 58.00 feet distant, from corner monument.  
 [Witness corner not set on R/W line.]

SKETCH, WITH COURSE AND DISTANCE TO ADJACENT CORNER IF DETERMINED IN THIS SURVEY.  
 (May Sketch or Paste Reproduction on Reverse Side.)



Brass cap set 4" above ground.  
 Brass cap stamped:  
 T.14N. R.67W.  
 1/4 S.33 W.C.  
 1/4 S. 4  
 T.13N.  
 LS 519 1974



R.L. Hudson certify that I have carefully performed or reviewed the work done on the diagrammed corner as reported on this recordation form and approve the same.

R.L. Hudson Wyoming L.S. No. 519  
 Signature of Surveyor Registration No.

STATE OF WYOMING,  
 Office of Clerk and Recorder,  
 County of Laramie

This "corner record" was filed for record on the 29 day of December, 1975, was noted on the cross-index plat and is assigned page No. ✓, in book No. filed.

Janet C. Whitehead  
 County Official  
 Cross Index No. 2 11 T. 14 R. 67 Mer.  
4 11 T. 13 R. 67 Mer.  
 \_\_\_\_\_ T. \_\_\_\_\_ R. \_\_\_\_\_ Mer.  
 \_\_\_\_\_ T. \_\_\_\_\_ R. \_\_\_\_\_ Mer.  
 \_\_\_\_\_ T. \_\_\_\_\_ R. \_\_\_\_\_ Mer.  
 \_\_\_\_\_ T. \_\_\_\_\_ R. \_\_\_\_\_ Mer.  
 \_\_\_\_\_ T. \_\_\_\_\_ R. \_\_\_\_\_ Mer.



The State of Wyoming }  
County of Laramie } SS

This instrument was filed for record  
at 244 o'clock P M. on the  
29th day of Dec  
A. D. 19 25 and duly recorded in  
book 1 on page 11111.

*James C. Whitbread*

County Clerk & Ex-Officio Register at Deeds  
By..... Deputy

Photographed   
Indexed   
Filed   
Assessor